



watch



automobile



aerospace



medical



industry



TOOL HOLDERS TORNOS.



Made in Switzerland
since 1969

PCM WILLEN SA

For over 40 years, PCM Willen SA is one of the world's leading manufacturers of special tool holders for automatic lathes. All our products are developed and manufactured in Switzerland and bear the label «Swiss Made», which is synonymous with precision, quality and reliability.

Our company is located in the middle of French-speaking part of Switzerland at the edge of Lake Geneva near Montreux. Our international dealer network ensures continued after sales support. We offer training courses, which we tailor to individual customer requirements.

PCM stays for innovation and progress. Our superbly qualified engineering staff ensures finest quality of manufacturing solutions and keeps our customers ahead of the competition.

In close cooperation with machine builders and end users, we stay on the way to satisfied customers. We will keep this track in the future.

The best quality toolholders can only provide optimum performance if they are maintained or repaired with first class replacement parts. PCM experts emphasize professional after sale support for all PCM equipment.



YOUR CHOICE N°1 IN TOOLING SYSTEMS

- Long service life
- Very gentle transmission even at high speed operation
- 100% tested
- Customised tool available

High performance seal for an hermetic tool holder

High precision preloaded spindle ball bearings class P4S

Low backlash and high transmission accuracy

Case-hardened and grinded spindle

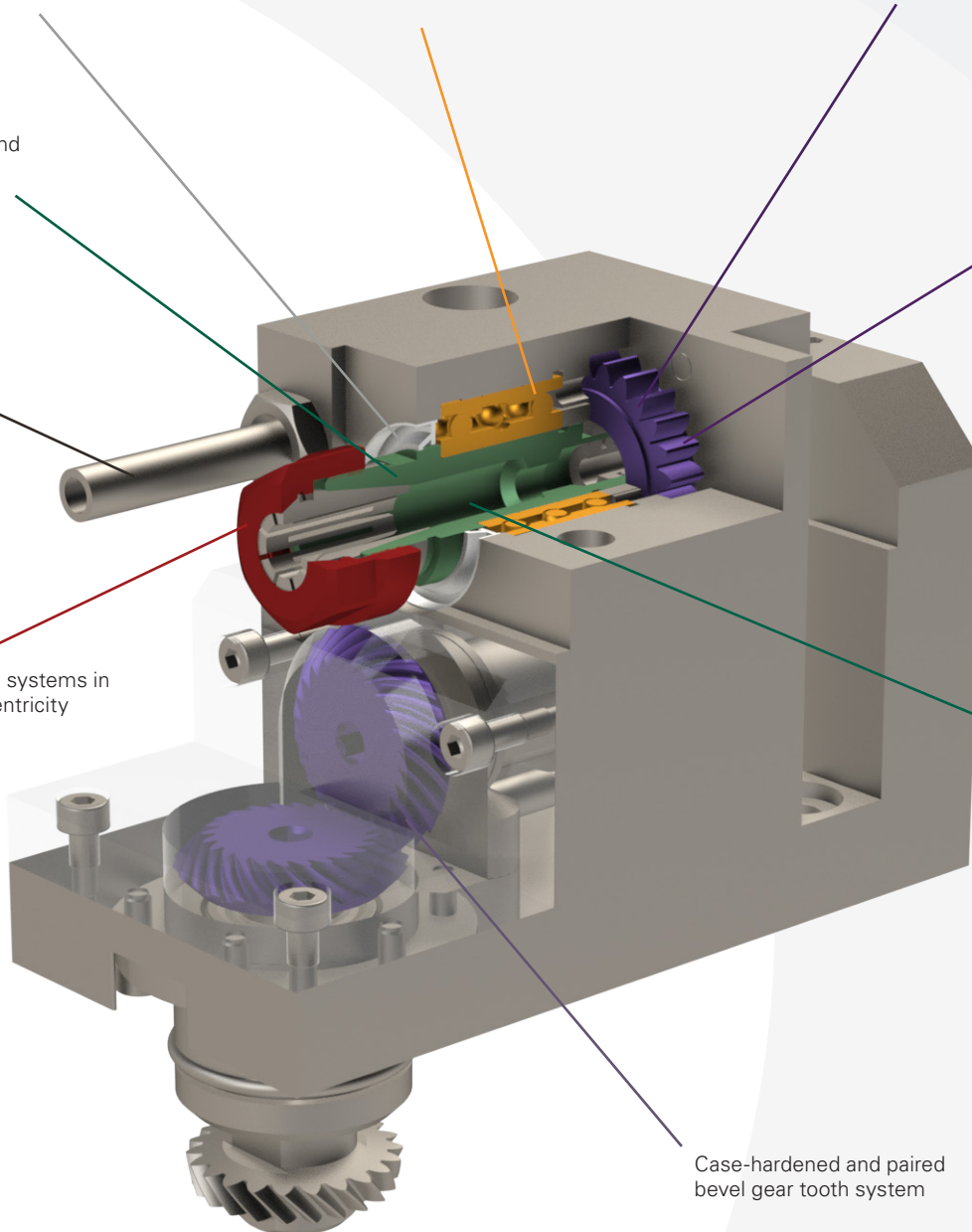
Different ratios available

High flexible coolant system (Hirt Line)

Different clamping systems in high precise concentricity

Available with coolant through the spindle

Case-hardened and paired bevel gear tooth system



INHALT / TABLE DES MATIÈRES / SUMMARY

TORNOS DECO10

DE10-0001.....	7
DE10-0001-1.3x.....	7
DE10-0002.....	7
DE10-0003.....	7
DE10-0004.....	8
DE10-0006.....	8
DE10-0011-DEC.....	8
DE10-0011-II.....	8
DE10-0011.....	9
DE10-0012-II.....	9
DE10-0012.....	9
DE10-0013.....	9
DE10-0014.....	10
DE10-0015-II.....	10
DE10-0015.....	10
DE10-0016-II.....	10
DE10-0016.....	11
DE10-0031.....	11
DE10-GTF-010.....	11
DE10-W15.....	11

TORNOS DECO13

DE13-0001-H.....	13
DE13-0001.....	13
DE13-0002-H.....	13
DE13-0002.....	13
DE13-0003-H.....	14
DE13-0003.....	14
DE13-0010.....	14
DE13-0011.....	14
DE13-0012.....	15
DE13-0015.....	15
DE13-0020.....	15
DE13-0041.....	15
DE13-0042.....	16

DE13-0050.....	16
DE13-0060.....	16
DE13-GTF-010.....	16
DE13-HF-220.....	17
DE13-OF-030.....	17
DE13-W15.....	17
DE13-W25.....	17

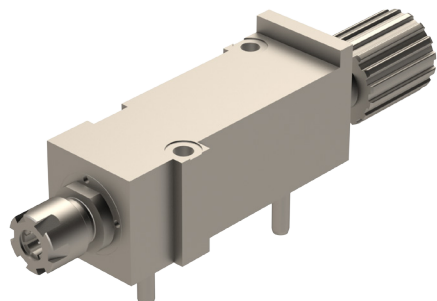
TONOS DECO20

DE20-0001-HP.....	19
DE20-0001.....	19
DE20-0002.....	19
DE20-0002-CR.....	19
DE20-0002-HP.....	20
DE20-0003-2X.....	20
DE20-0003-CR.....	20
DE20-0003-HP.....	20
DE20-0003-IK.....	21
DE20-0003.....	21
DE20-0004.....	21
DE20-0005.....	21
DE20-0010.....	22
DE20-0011.....	22
DE20-0020.....	22
DE20-2160-L.....	22
DE20-2160.....	23
DE20-OF-010.....	23
DE20-OF-020.....	23
DE20-OF-030.....	23
DE20-OF-040.....	24
DE20-W15-II.....	24
DE20-W15.....	24
DFF-1622.....	25
GA20-GSE-E20.....	25
SY8-0001.....	25

TORNOS

- DECO 10

DE10-0001

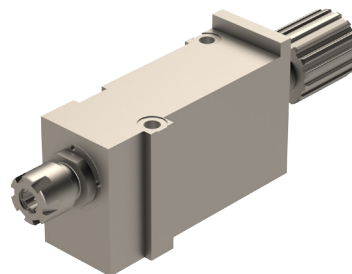





	ER11
	-
	1:1
RPM max.	12'000

Bemerkung / Remarque / Note :

Height 15mm
Total length 141mm

DE10-0002

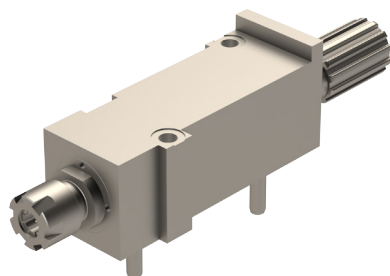





	ER11
	-
	1:1
RPM max.	12'000

Bemerkung / Remarque / Note :

Height 30mm
Total length 141mm

DE10-0001-1.3X






	ER11
	-
	1:3/4
RPM max.	12'000

Bemerkung / Remarque / Note :

Height 15mm
Total length 141mm



DE10-0003

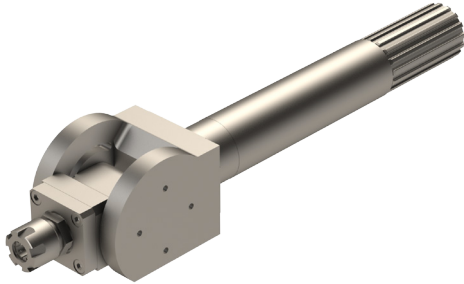





	ER11
	-
	1:1
RPM max.	12'000

Bemerkung / Remarque / Note :

Attachment Ø25mm

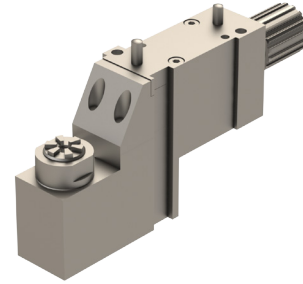
Kühlung / Arrosage / Cooling:  **INT** Intern / Intérieur / Interior  **EXT** Extern / Externe / Exterior  Ohne / Sans / Without




DE10-0004


	ER11
	-
	1:1
RPM max.	12'000

Bemerkung / Remarque / Note :

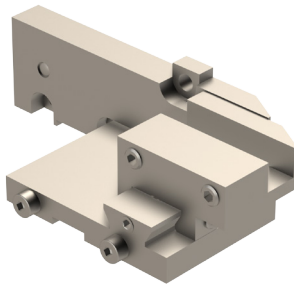
Adjustable 0°-90°
Attachment Ø25mm




DE10-0011-DEC


	ER11
	-
	1:1
RPM max.	12'000

Bemerkung / Remarque / Note :

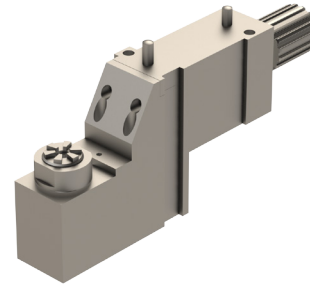
Distance Pin-Collet : 45.5mm
Offset Pin-Collet : 1mm




DE10-0006


	9mm x 10mm
	-
	-
RPM max.	-

Bemerkung / Remarque / Note :

Adjustable in Y on 38.2mm

DE10-0011-II


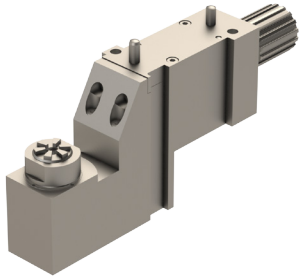
	ER11
	-
	1:1
RPM max.	12'000




Bemerkung / Remarque / Note :

Distance Pin-Collet : 54mm
Offset Pin-Collet : 1mm
CW/CW

Kühlung / Arrosage / Cooling:  INT Intern / Intérieur / Interior  EXT Extern / Externe / Exterior  Ohne / Sans / Without

DE10-0011

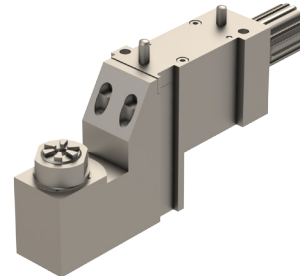





	ER11
	-
	1:1
RPM max.	12'000

Bemerkung / Remarque / Note :

Distance Pin-Collet : 54mm
 Offset Pin-Collet : 1mm
 CW/CCW

DE10-0012

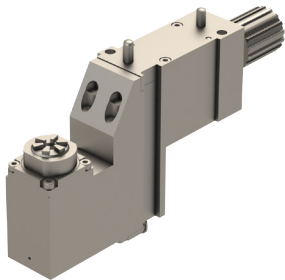





	ER11
	Ø 12 mm
	1:1.588
RPM max.	12'000

Bemerkung / Remarque / Note :

Distance Pin-Collet : 54mm
 Offset Pin-Collet : 1mm

DE10-0012-II

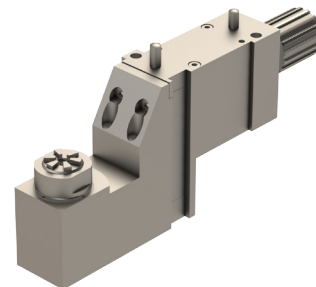




	ER11
	-
	1:1.588
RPM max.	12'000

Bemerkung / Remarque / Note :

Distance Pin-Collet : 54mm
 Offset Pin-Collet : 1mm

DE10-0013

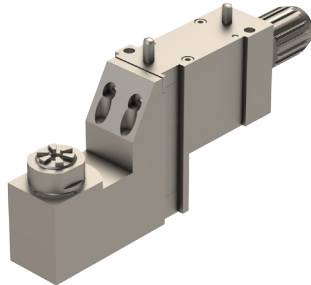





	ER11
	Ø 12 mm
	1:1
RPM max.	8'000

Bemerkung / Remarque / Note :

Distance Pin-Collet : 59mm
 Offset Pin-Collet : 1mm

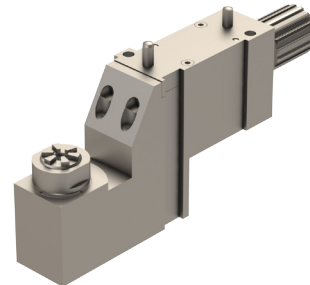
Kühlung / Arrosage / Cooling:  INT Intern / Intérieur / Interior  EXT Extern / Externe / Exterior  Ohne / Sans / Without




DE10-0014


	ER11
	-
	1:1.588
RPM max.	12'000

Bemerkung / Remarque / Note :

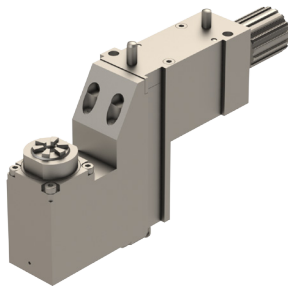
Distance Pin-Collet : 59mm
 Offset Pin-Collet : 1mm



DE10-0015


	ER11
	-
	1:1.588
RPM max.	12'000

Bemerkung / Remarque / Note :

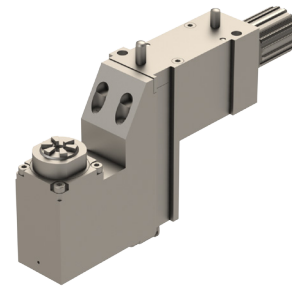
Distance Pin-Collet : 54mm
 Offset Pin-Collet : 0mm




DE10-0015-II


	ER11
	-
	1:1.588
RPM max.	12'000

Bemerkung / Remarque / Note :

Distance Pin-Collet : 54mm
 Offset Pin-Collet : 0mm

DE10-0016-II


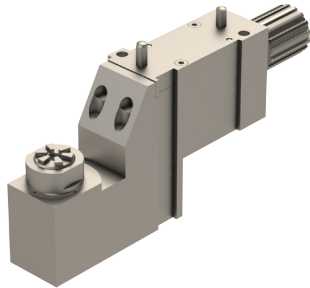
	ER11
	-
	1:1
RPM max.	12'000

Bemerkung / Remarque / Note :

Distance Pin-Collet : 54mm
 Offset Pin-Collet : 0mm

Kühlung / Arrosage / Cooling:  INT Intern / Intérieur / Interior  EXT Extern / Externe / Exterior  Ohne / Sans / Without

DE10-0016

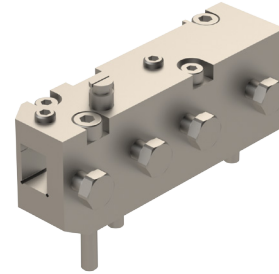


	ER11
	-
	1:1
RPM max.	12'000

Bemerkung / Remarque / Note :

Distance Pin-Collet : 54mm
 Offset Pin-Collet : 0mm

DE10-GTF-010

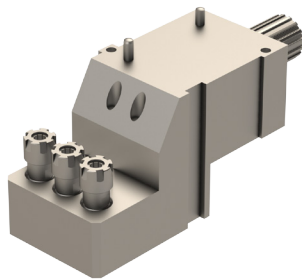


	10mm x 10mm
	-
	-
RPM max.	-

Bemerkung / Remarque / Note :

-

DE10-0031

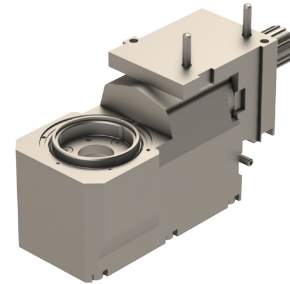


	ER11
	-
	1:1
RPM max.	12'000

Bemerkung / Remarque / Note :

Use 2 locations

DE10-W15



	-
	-
	1:1
RPM max.	12'000

Bemerkung / Remarque / Note :

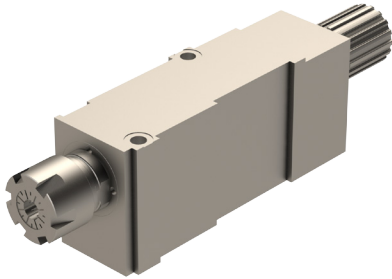
Use 2 locations, Angle 15°
 GLOOR 501-0022, Z=6, Ø7mm
 UTILIS MWT06 164 4242 115 07, Z=7, Ø6mm
 SWANOG, Z=6, Ø10mm or 8mm or 7mm or 6mm




Kühlung / Arrosage / Cooling: INT Intern / Intérieur / Interior EXT Extern / Externe / Exterior Ohne / Sans / Without

TORNOS

- DECO 13

DE13-0001-H

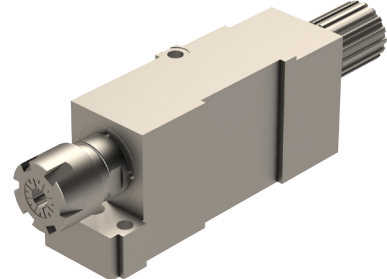





	ER20
	-
	1:1
RPM max.	8'000

Bemerkung / Remarque / Note :

Height 25mm + 3mm + 10mm
 Total length 193mm

DE13-0002-H

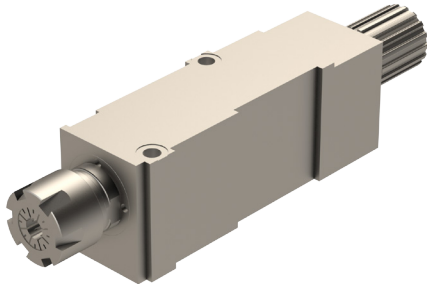





	ER20
	-
	1:1
RPM max.	8'000

Bemerkung / Remarque / Note :

Height 25mm + 3mm + 10mm
 Total length 180mm

DE13-0001

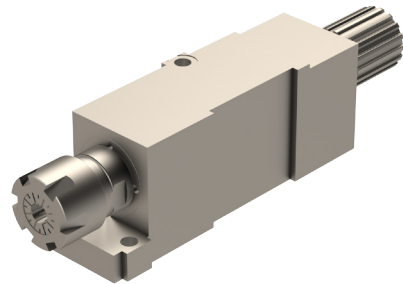





	ER20
	-
	1:1
RPM max.	8'000

Bemerkung / Remarque / Note :

Height 28mm
 Total length 193mm

DE13-0002

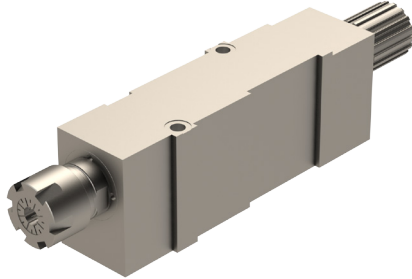


	ER20
	-
	1:1
RPM max.	8'000

Bemerkung / Remarque / Note :

Height 28mm
 Total length 180mm

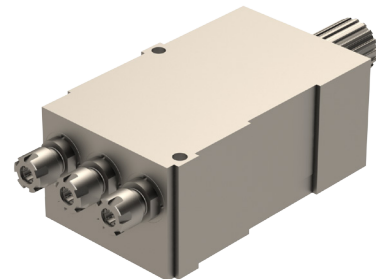
Kühlung / Arrosage / Cooling:  INT Intern / Intérieur / Interior  EXT Extern / Externe / Exterior  Ohne / Sans / Without

DE13-0003-H


	ER20
	-
	1:1
RPM max.	8'000

Bemerkung / Remarque / Note :

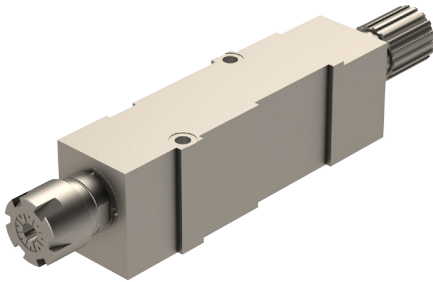
Height 25mm + 3mm + 10mm
 Total length 218mm

DE13-0010


	ER11
	-
	1:1
RPM max.	8'000

Bemerkung / Remarque / Note :

Height 25mm + 3mm + 10mm
 Use 2 locations

DE13-0003


	ER20
	-
	1:1
RPM max.	8'000

Bemerkung / Remarque / Note :

Height 28mm
 Total length 218mm

DE13-0011

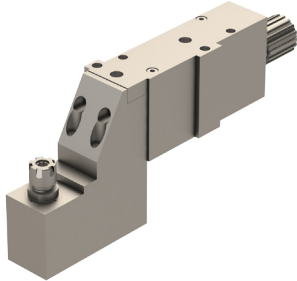

	ER11
	-
	???????????
RPM max.	8'000

Bemerkung / Remarque / Note :

Distance Pin-Collet : 62mm
 Offset Pin-Collet : 0mm

Kühlung / Arrosage / Cooling: INT Intern / Intérieur / Interior EXT Extern / Externe / Exterior Ohne / Sans / Without

DE13-0012

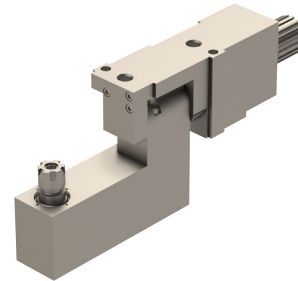


	ER11
	-
	1:1.5
RPM max.	8'000

Bemerkung / Remarque / Note :

Distance Pin-Collet : 62mm
 Offset Pin-Collet : 0mm

DE13-0020

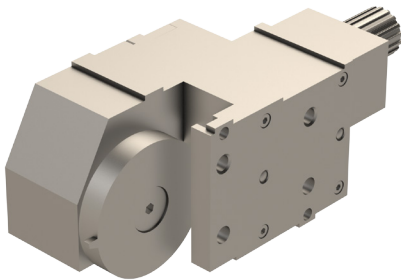


	ER11
	-
	1:1
RPM max.	8'000

Bemerkung / Remarque / Note :

Adjustable 180°
 Distance Pin-Collet : 62mm
 Offset Pin-Collet : 0mm

DE13-0015

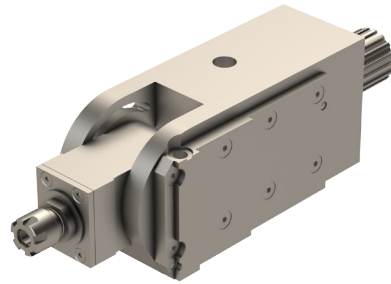


	-
	Ø 16 mm
	1:1
RPM max.	8'000

Bemerkung / Remarque / Note :

Use 2 locations
 Maximum out Ø 80mm

DE13-0041

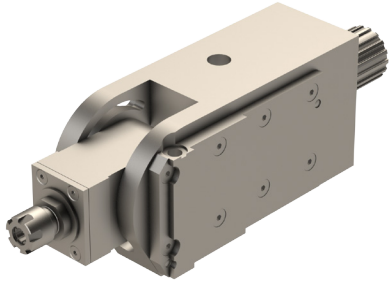





	ER11
	-
	1:1
RPM max.	8'000

Bemerkung / Remarque / Note :

Adjustable 0-90°

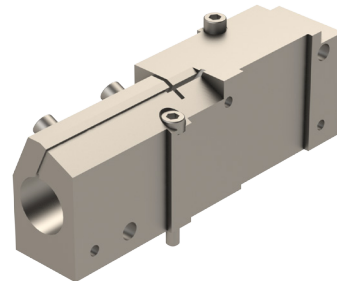
Kühlung / Arrosage / Cooling: INT Intern / Intérieur / Interior EXT Extern / Externe / Exterior Ohne / Sans / Without




DE13-0042


	ER11
	-
	1:1
RPM max.	8'000

Bemerkung / Remarque / Note :

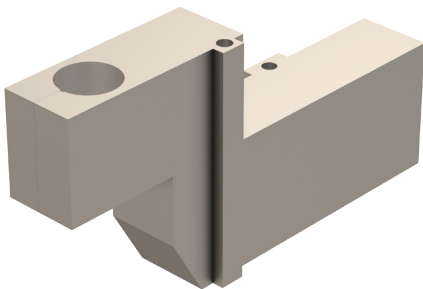
Adjustable -13° to 90°
Use 2 locations




DE13-0060


	Ø25
	-
	-
RPM max.	-

Bemerkung / Remarque / Note :

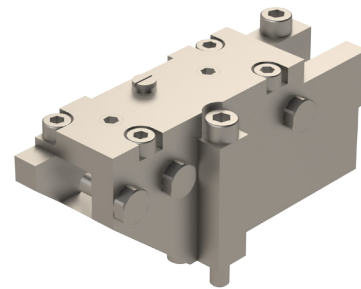
-




DE13-0050


	Ø25
	-
	-
RPM max.	-

Bemerkung / Remarque / Note :

For High Frequenz broaches
Distance Pin-Ø : 52mm

DE13-GTF-010


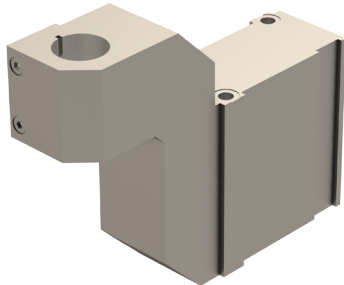
	12mm x 12mm
	-
	-
RPM max.	-




Bemerkung / Remarque / Note :

-

Kühlung / Arrosage / Cooling:  INT Intern / Intérieur / Interior  EXT Extern / Externe / Exterior  Ohne / Sans / Without

DE13-HF-220

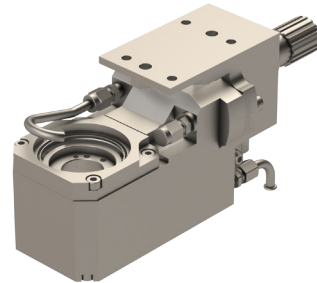





	Ø22
	-
	-
RPM max.	-

Bemerkung / Remarque / Note :

For High Frequenz broaches
 Distance Pin-Ø : 62mm

DE13-W15

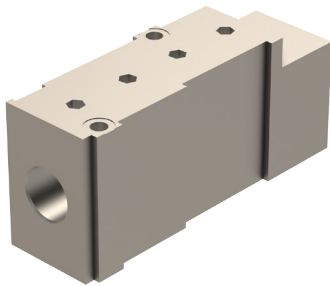




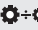
	-
	-
	1:1
RPM max.	8'000

Bemerkung / Remarque / Note :

Angle $\pm 15^\circ$, Use 2 locations
 GLOOR 501-0004, Z=6, Ø12mm
 GLOOR 501-0007, Z=6, Ø10mm
 UTILIS 139823, Z=9, Ø12mm

DE13-OF-030

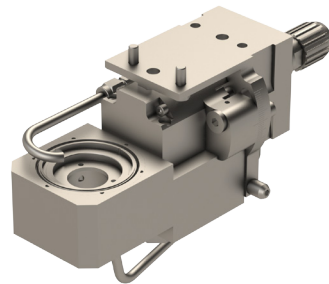





	Ø20
	-
	-
RPM max.	-

Bemerkung / Remarque / Note :

-

DE13-W25



	-
	-
	1:1
RPM max.	8'000

Bemerkung / Remarque / Note :

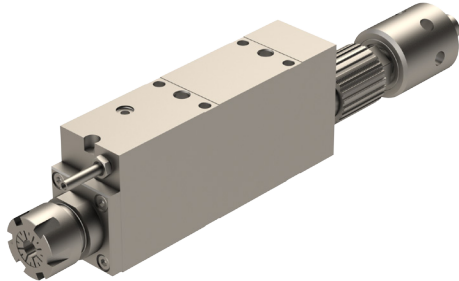
Angle $\pm 25^\circ$, use 2 locations

Kühlung / Arrosage / Cooling:  INT Intern / Intérieur / Interior  EXT Extern / Externe / Exterior  Ohne / Sans / Without




TORNOS

- DECO 20

DE20-0001-HP



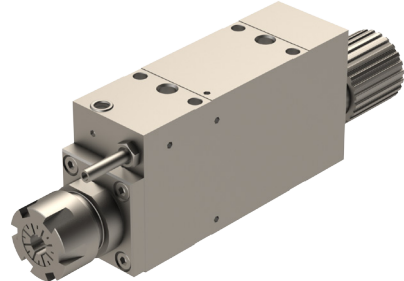
🔹 INT

	ER25
	-
	1:1
RPM max.	8'000




Bemerkung / Remarque / Note :

Total length (with out intern systeme) 258mm

DE20-0002



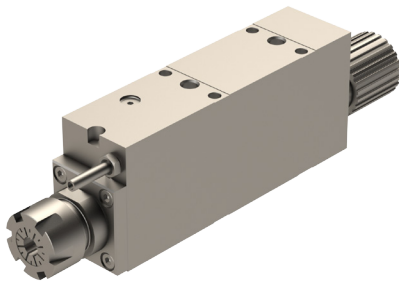
🔹 EXT

	ER25
	-
	1:1
RPM max.	8'000




Bemerkung / Remarque / Note :

Total length 228mm

DE20-0001



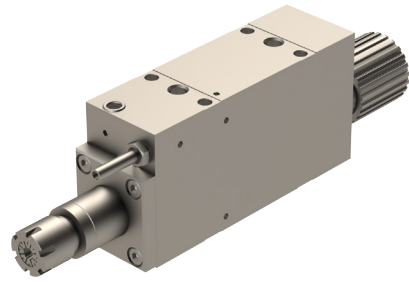
🔹 EXT

	ER25
	-
	1:1
RPM max.	8'000




Bemerkung / Remarque / Note :

Total length 258mm

DE20-0002-CR



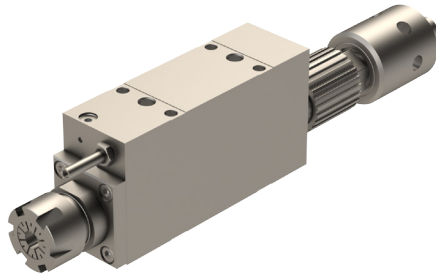
🔹 EXT




	??????
	-
	1:1
RPM max.	8'000

Bemerkung / Remarque / Note :

Total length 187mm
Quick change

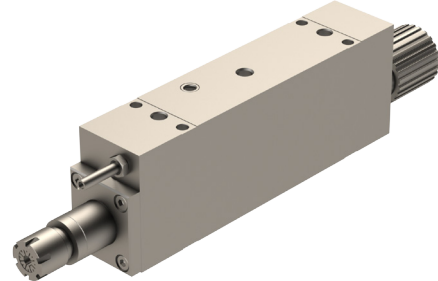
Kühlung / Arrosage / Cooling: 🔹 INT Intern / Intérieur / Interior 🔹 EXT Extern / Externe / Exterior 🚫 Ohne / Sans / Without




DE20-0002-HP

 INT

	ER25
	-
	1:1
RPM max.	8'000

Bemerkung / Remarque / Note :

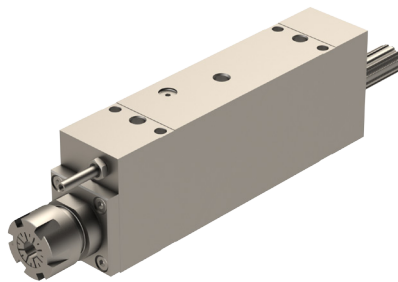
Total length 228mm



DE20-0003-CR



	ER11
	Ø 12 mm
	1:1
RPM max.	8'000

Bemerkung / Remarque / Note :

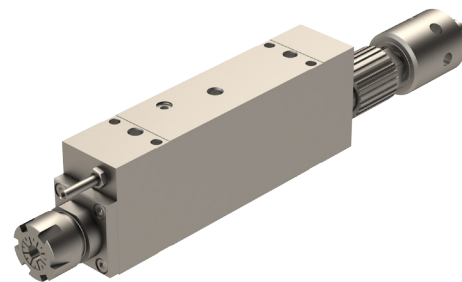
-




DE20-0003-2X



	ER11
	Ø 12 mm
	1:1
RPM max.	8'000

Bemerkung / Remarque / Note :

Total length 292mm

DE20-0003-HP


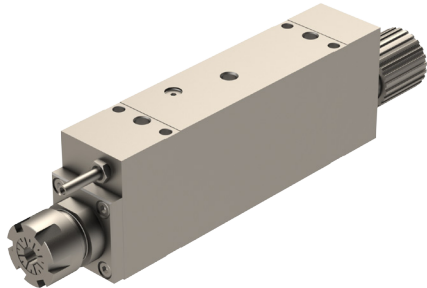

	ER11
	Ø 12 mm
	1:1
RPM max.	8'000

Bemerkung / Remarque / Note :




-

 Kühlung / Arrosage / Cooling:  INT Intern / Intérieur / Interior  EXT Extern / Externe / Exterior  Ohne / Sans / Without

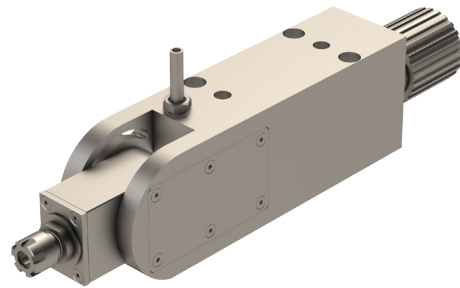
DE20-0003-IK






🔥 INT

	ER11
	Ø 12 mm
	1:1
RPM max.	8'000
Bemerkung / Remarque / Note :	
-	

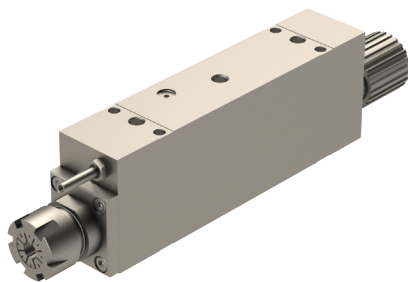
DE20-0004






🔥 EXT

	ER11
	Ø 12 mm
	1:1
RPM max.	8'000
Bemerkung / Remarque / Note :	
-	

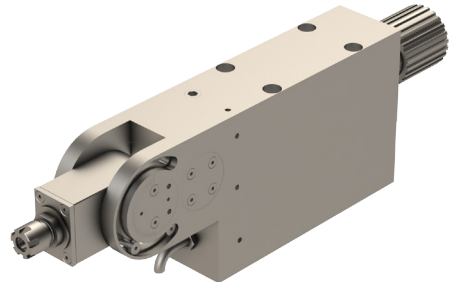
DE20-0003






🔥 INT

	ER11
	Ø 12 mm
	1:1
RPM max.	8'000
Bemerkung / Remarque / Note :	
-	

DE20-0005

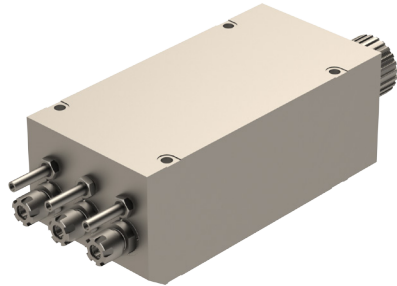


🔥 EXT

	ER11
	Ø 12 mm
	1:1
RPM max.	8'000
Bemerkung / Remarque / Note :	
-	

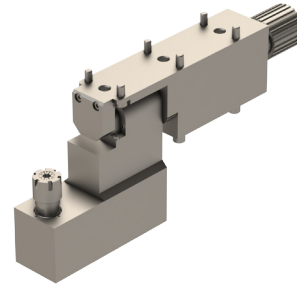
Kühlung / Arrosage / Cooling: 🔥 INT Intern / Intérieur / Interior 🔥 EXT Extern / Externe / Exterior 🚫 Ohne / Sans / Without

DE20-0010



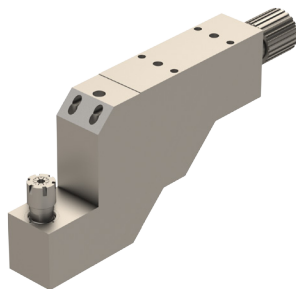
	ER11
	Ø 12 mm
	1:1
RPM max.	8'000
Bemerkung / Remarque / Note :	
-	

DE20-0020



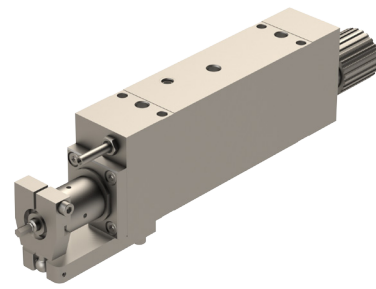
	ER11
	Ø 12 mm
	1:1
RPM max.	8'000
Bemerkung / Remarque / Note :	
-	

DE20-0011



	ER11
	Ø 12 mm
	1:1
RPM max.	8'000
Bemerkung / Remarque / Note :	
-	

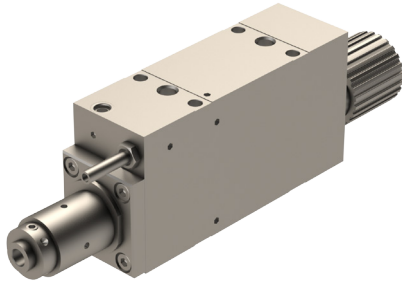
DE20-2160-L






	ER11
	Ø 12 mm
	1:1
RPM max.	8'000
Bemerkung / Remarque / Note :	
-	

Kühlung / Arrosage / Cooling: INT Intern / Intérieur / Interior EXT Extern / Externe / Exterior Ohne / Sans / Without

DE20-2160

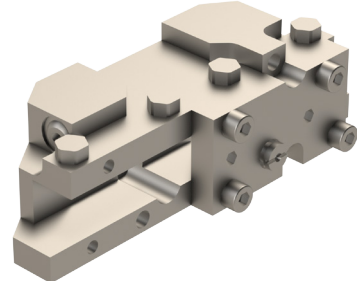





	ER11
	Ø 12 mm
	1:1
RPM max.	8'000

Bemerkung / Remarque / Note :

-

DE20-OF-020

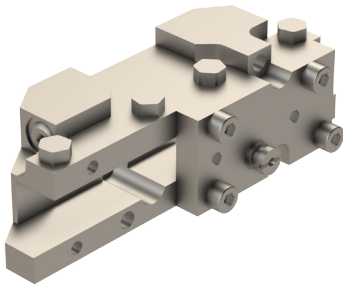





	ER11
	Ø 12 mm
	1:1
RPM max.	8'000

Bemerkung / Remarque / Note :

-

DE20-OF-010

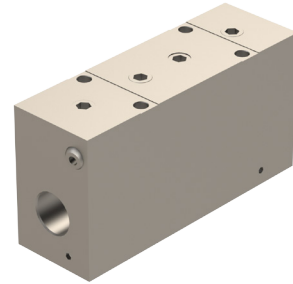




	ER11
	Ø 12 mm
	1:1
RPM max.	8'000

Bemerkung / Remarque / Note :

-

DE20-OF-030

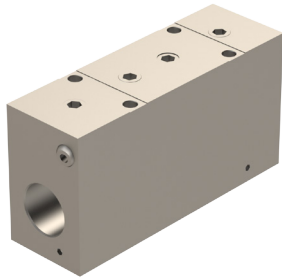





	ER11
	Ø 12 mm
	1:1
RPM max.	8'000

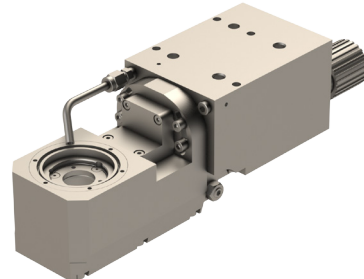
Bemerkung / Remarque / Note :




-

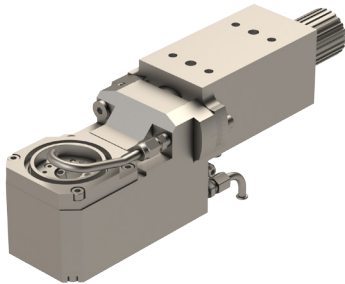
Kühlung / Arrosage / Cooling:  **INT** Intern / Intérieur / Interior  **EXT** Extern / Externe / Exterior  Ohne / Sans / Without




DE20-OF-040





	ER11
	Ø 12 mm
	1:1
RPM max.	8'000
Bemerkung / Remarque / Note :	
-	

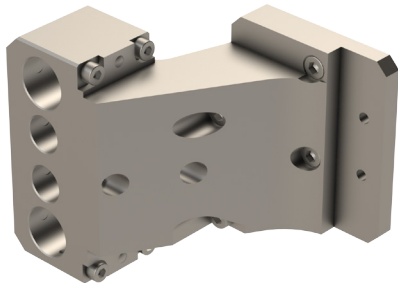
DE20-W15





	ER11
	Ø 12 mm
	1:1
RPM max.	8'000
Bemerkung / Remarque / Note :	
-	

DE20-W15-II





	ER11
	Ø 12 mm
	1:1
RPM max.	8'000
Bemerkung / Remarque / Note :	
-	

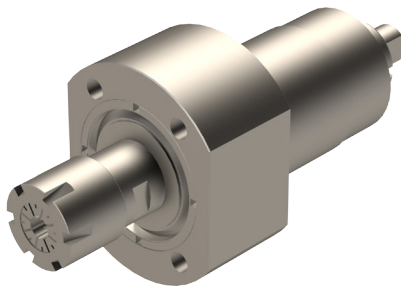
Kühlung / Arrosage / Cooling:  **INT** Intern / Intérieur / Interior  **EXT** Extern / Externe / Exterior  Ohne / Sans / Without




DFF-1622
 INT

	ER11
	Ø 12 mm
	1:1
RPM max.	8'000
Bemerkung / Remarque / Note :	
-	

SY8-0001
 EXT

	ER11
	Ø 12 mm
	1:1
RPM max.	8'000
Bemerkung / Remarque / Note :	
-	

GA20-GSE-E20
 INT

	ER11
	Ø 12 mm
	1:1
RPM max.	8'000
Bemerkung / Remarque / Note :	
-	

Kühlung / Arrosage / Cooling:  INT Intern / Intérieur / Interior  EXT Extern / Externe / Exterior  Ohne / Sans / Without

Visit us online :
www.pcm.ch



PCM Willen SA

Route du Grammont 101
1844 Villeneuve
Switzerland

Tél. +41 (0)21 967 33 66
Fax: +41 (0)21 960 38 95