



watch



automobile



aerospace



medical



industry



TOOL HOLDERS TSUGAMI.



Made in Switzerland
since 1969

PCM WILLEN SA

For over 40 years, PCM Willen SA is one of the world's leading manufacturers of special tool holders for automatic lathes. All our products are developed and manufactured in Switzerland and bear the label «Swiss Made», which is synonymous with precision, quality and reliability.

Our company is located in the middle of French-speaking part of Switzerland at the edge of Lake Geneva near Montreux. Our international dealer network ensures continued after sales support. We offer training courses, which we tailor to individual customer requirements.

PCM stays for innovation and progress. Our superbly qualified engineering staff ensures finest quality of manufacturing solutions and keeps our customers ahead of the competition.

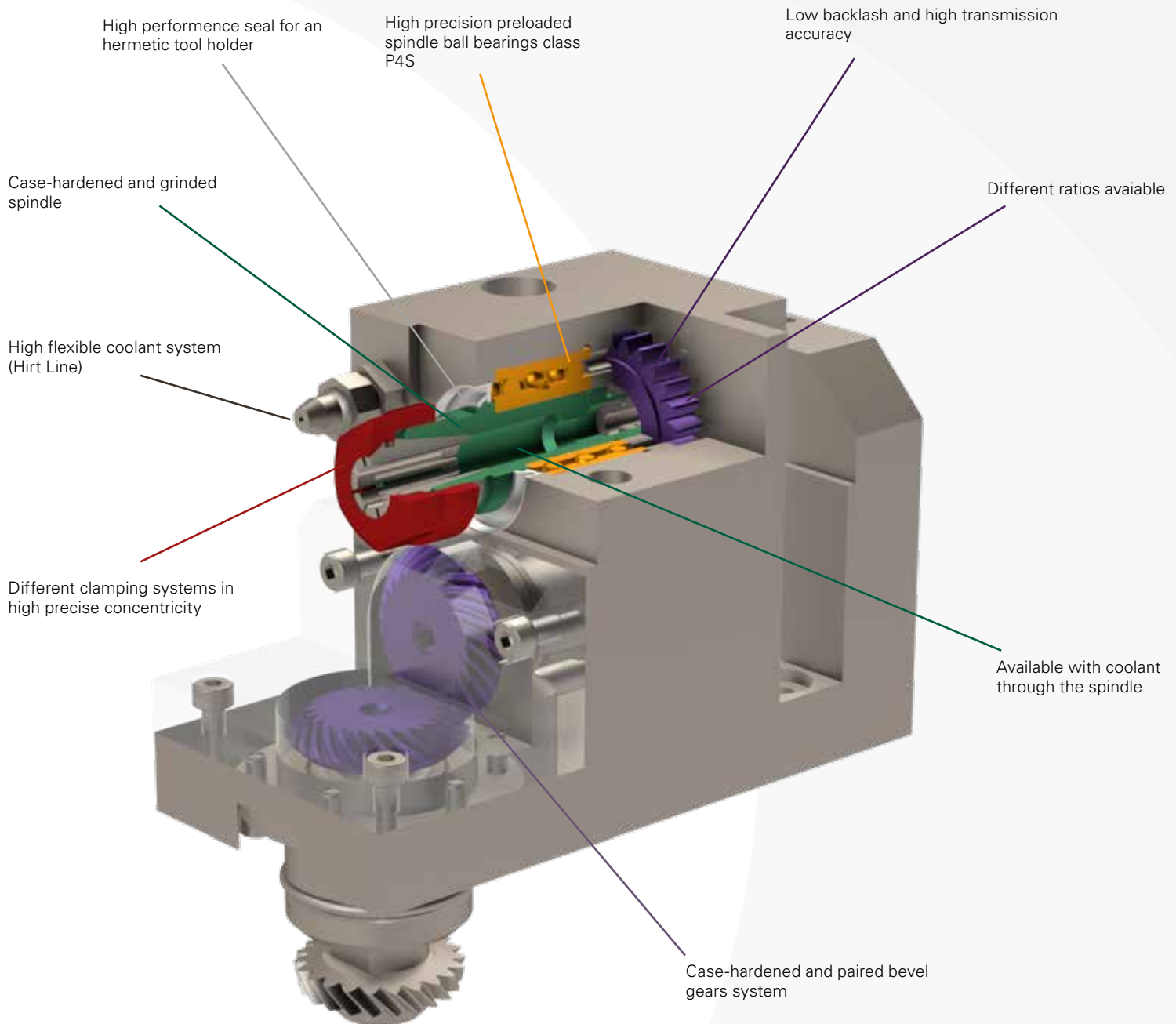
In close cooperation with machine builders and end users, we stay on the way to satisfied customers. We will keep this track in the future.

The best quality toolholders can only provide optimum performance if they are maintained or repaired with first class replacement parts. PCM experts emphasize professional after sale support for all PCM equipment.



YOUR CHOICE N°1 IN TOOLING SYSTEMS

- Long service life ←
- Very gentle transmission even at high speed operation ←
- 100% tested ←
- Customised tool available ←



TSUGAMI

PO3

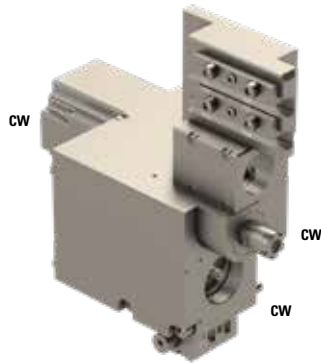
Special tools	5
Face drilling/milling tools	9
Cross drilling/milling tools	10
Hobbing tools	11
Polygon tools	12
Whirling tools	15

Other machines

Cross drilling/milling tools	16
Face drilling/milling tools	21
Polygon tools	30
Angle adjustable tools	31
Slitting saw tools	33
Thread milling tools	34
Thread whirling tools	35

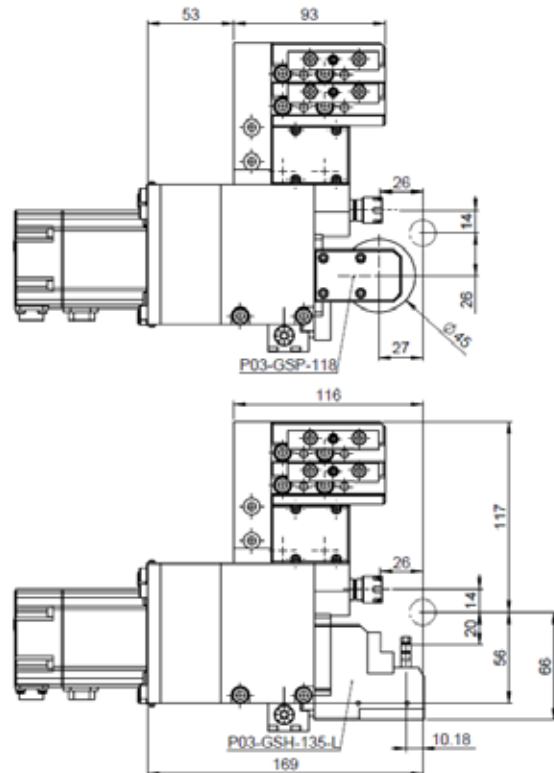
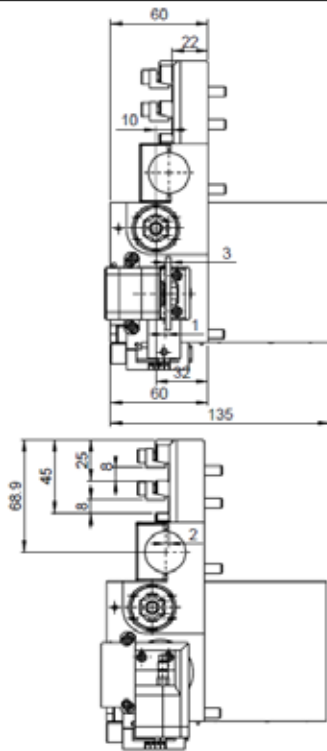
Rotation: **cw** Clockwise **ccw** Counterclockwise
 Cooling:  **INT** Interior  **EXT** Exterior  Without

P03-GSC-117-S

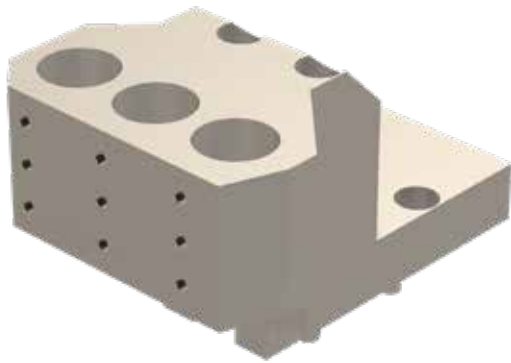


	ER11
	1:2
RPM max.	16'000
Machines Types	P034H
Note :	

Original main block is to replace by this tool. To adjust the offset please contact your local TSUGAMI dealer.
 Tool N°01 cutter carrier 8mm x 8mm
 Tool N°02 cutter carrier 8mm x 8mm
 Tool N°03 high frequency Ø25
 Tool N°04 in ER11 with RPM 16'000.
 Tool N°05 is a modular quick change for different operation.



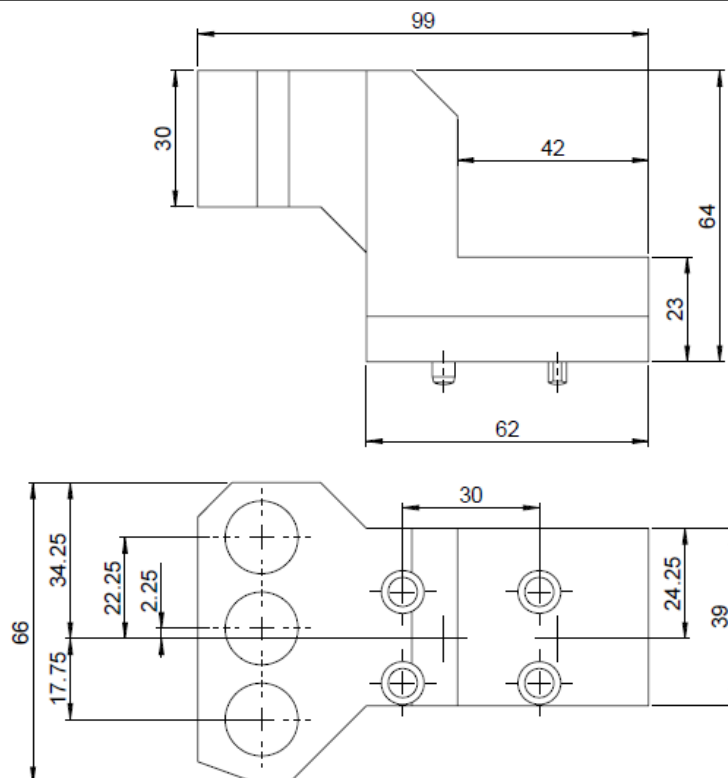
P03-GDF-416



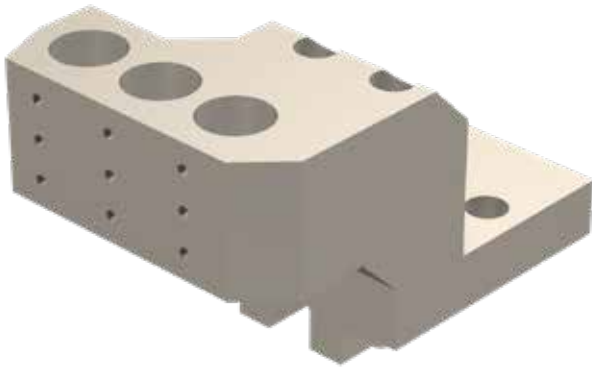
Ø 3x16

Machines Types P034H

Note :



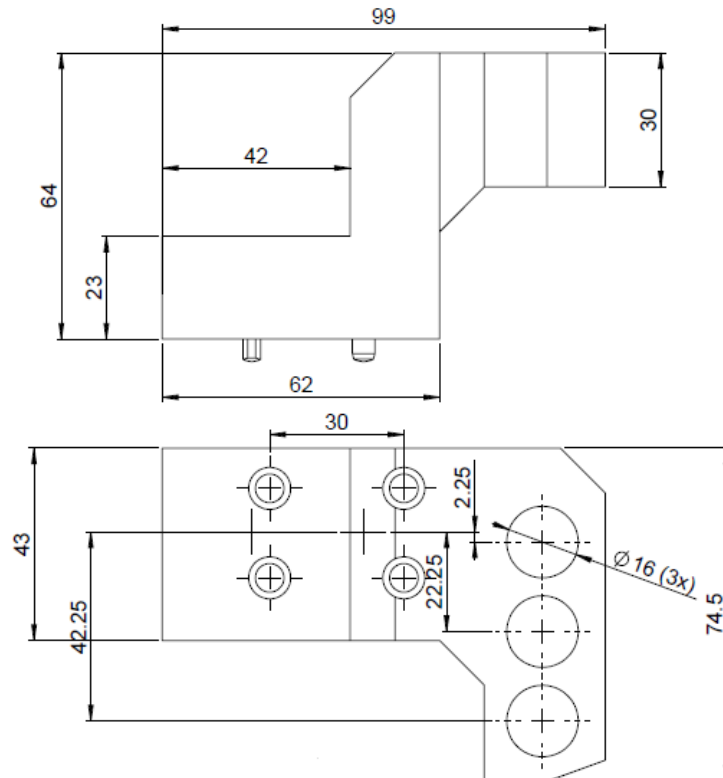
P03-GDF-516



Ø 3x16

Machines Types P034H

Note :



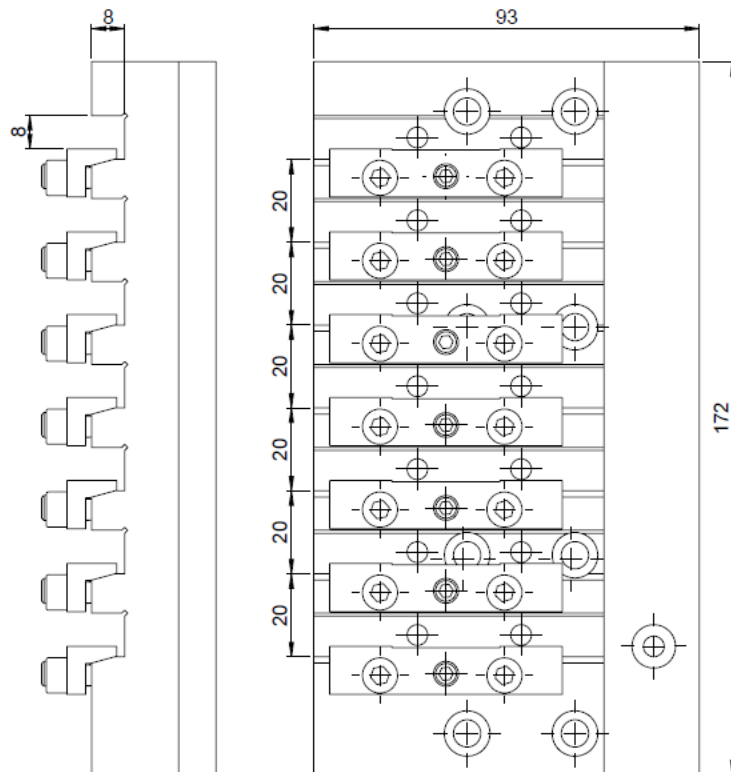
P03-GTF-018



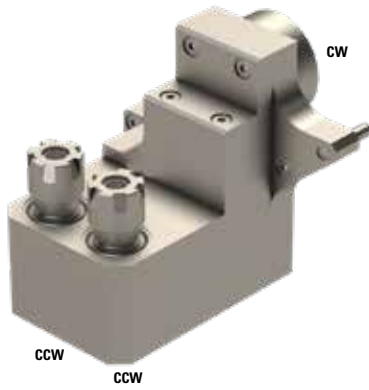
7x(8x8)

Machines Types

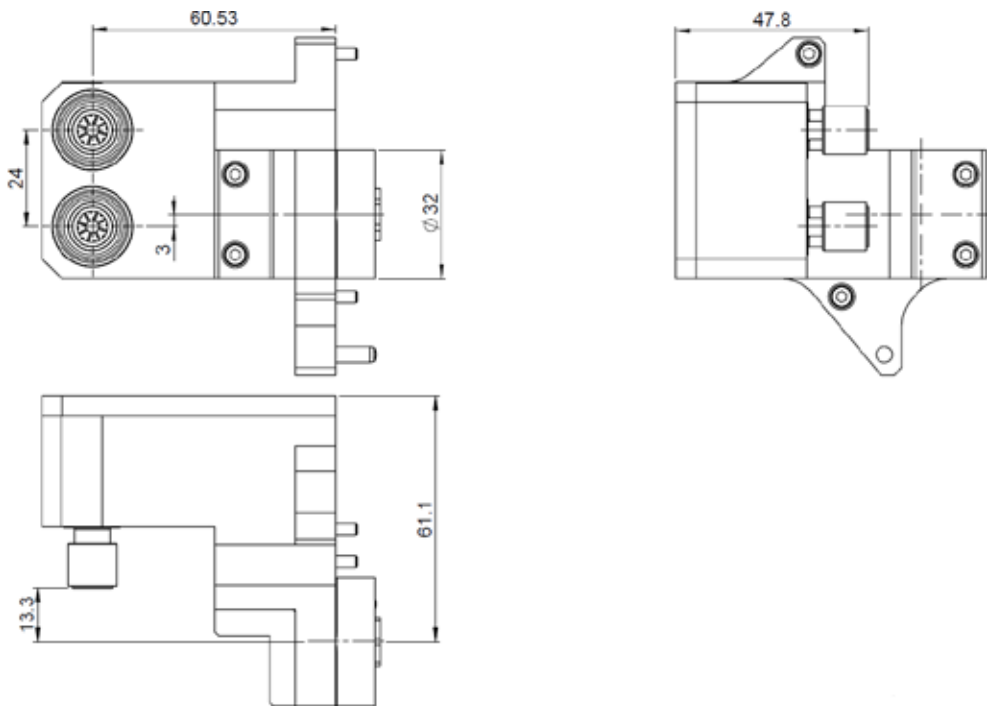
P034H

Note :

P03-GSE-207-II



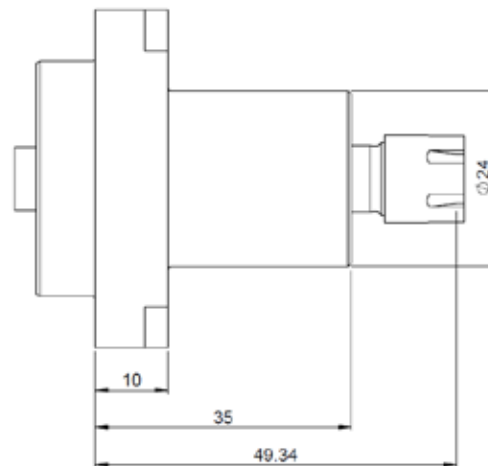
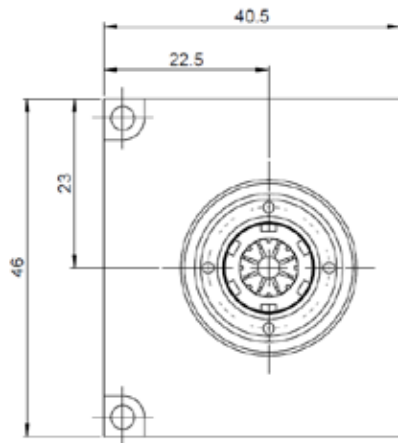
	2xER11
	1:1
RPM max.	8'000
Machines Types	P034H
Note :	



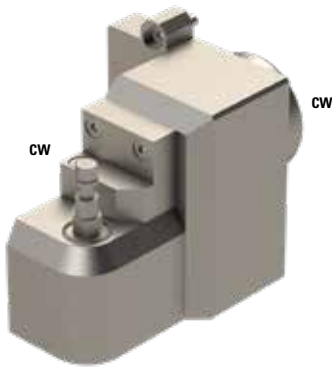
P03-GSC-015

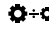


	ER08
	1:1
RPM max.	8'000
Machines Types	P034H
Note :	

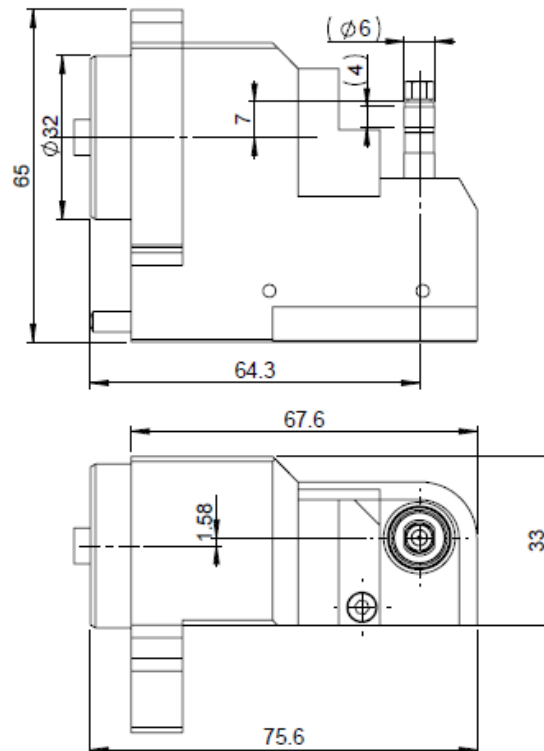


P03-GSH-135-L

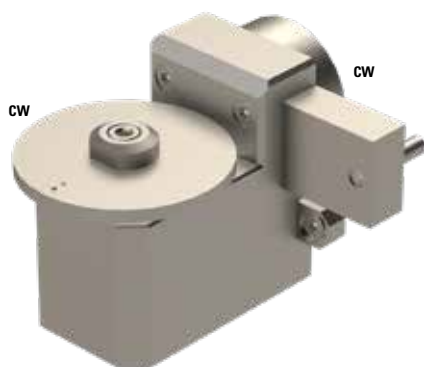


	3.5
	1:1
RPM max.	8'000
Machines Types	P034H
Note :	

Adjustable $\pm 2.5^\circ$

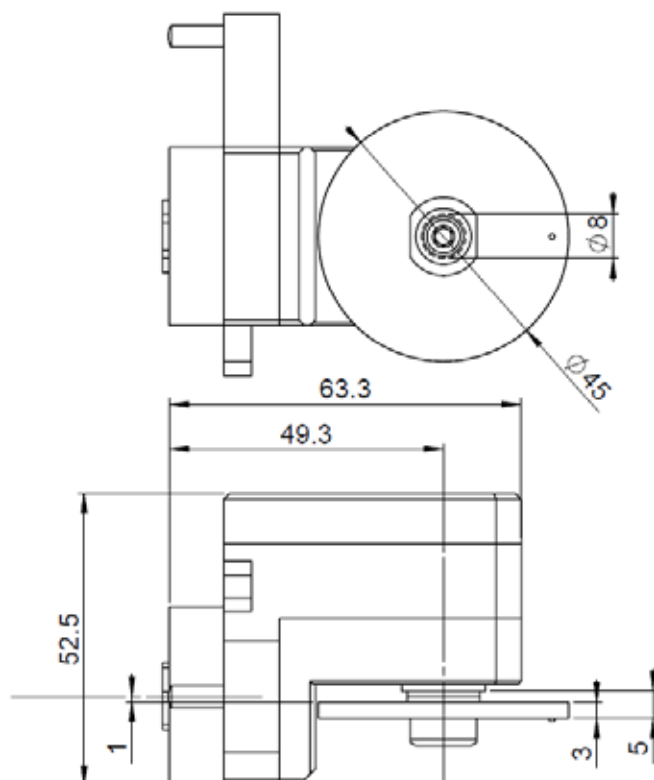


P03-GSP-118

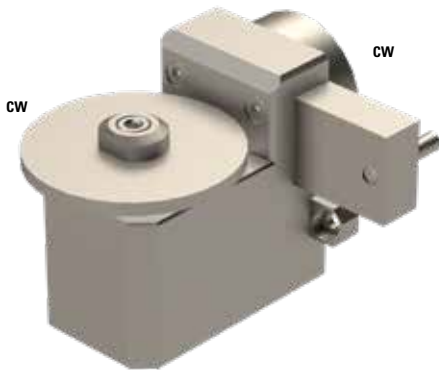


	8
	1:1
RPM max.	8'000
Machines Types	P034H
Note :	

Adjustable $\pm 2.5^\circ$
Max. tool $\varnothing 45$ mm

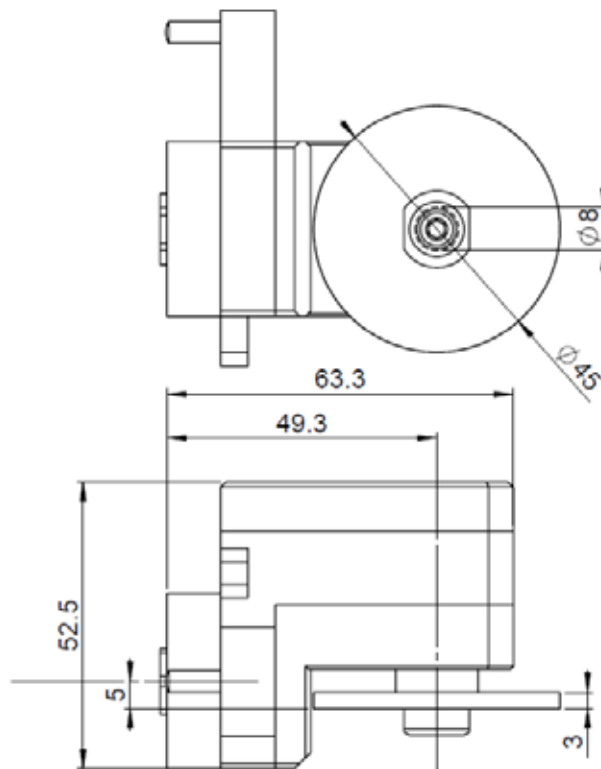


P03-GSP-218

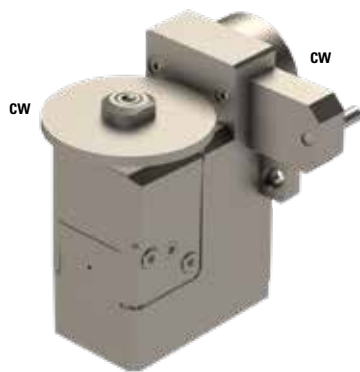


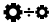
	8
	1:1
RPM max.	8'000
Machines Types	P034H
Note :	

Adjustable $\pm 2.5^\circ$
Max. tool $\varnothing 45$ mm
Cutter-saw has the same offset as the cutter carrier

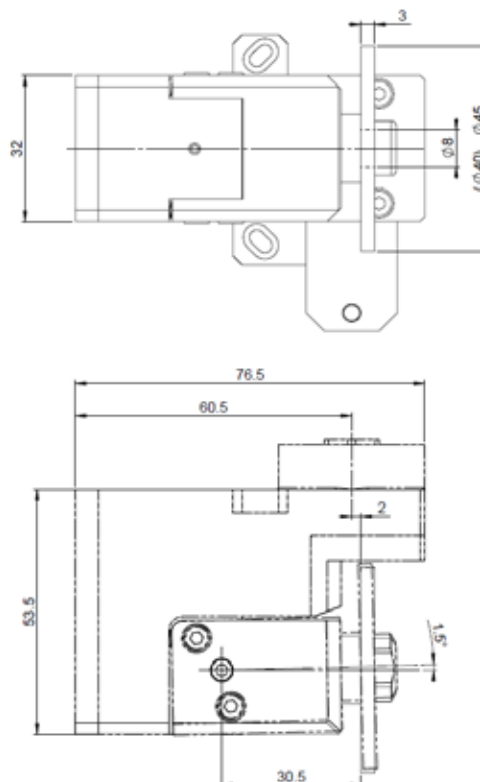


P03-GSP-318




	8
	1:1
RPM max.	8'000
Machines Types	P034H
Note :	

Adjustable in X $\pm 2.5^\circ$
 Adjustable in Y $\pm 1.5^\circ$
 Max. tool $\varnothing 45$ mm



P03-GSW-220



 -

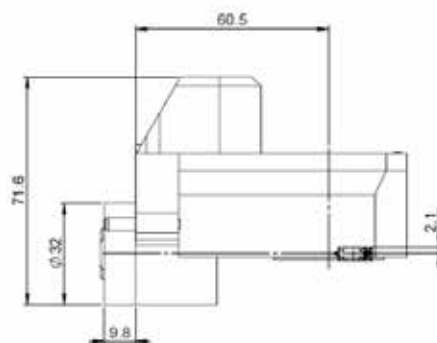
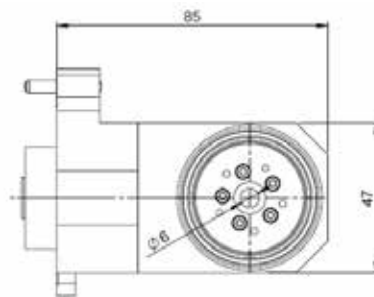
 1:1

RPM max. 8'000

Machines Types P034H


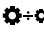
Note :

Adjustable 0°-20°



BW20-GSC-105-4X



	ER08
	1:3.8
RPM max.	30'400
Machines Types	BW207 BW208 BW208Z BW209Z


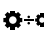
Note :

Cross drilling/milling
Gang tool T01, T02, T11, T12
Main spindle
Speeder



B07-GSC-107-4X



	ER11
	1:3.8
RPM max.	22'800
Machines Types	B073 - III, B074 - III, B0123 - III, B0124 - III, B0203 - III, B0204 - III, B075 - III, B0125 - III, B0126 - III, B0205 - III, B0206 - III

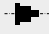
Note :

Cross drilling/milling
Gangtool, T01
Main Spindle
Speeder



B07-GSC-105-4X



 ER8

 1:3.8

RPM max. 22'800

Machines Types

B073 - III, B074 - III,
B0123 - III, B0124 - III,
B0203 - III, B0204 - III,
B075 - III, B0125 - III,
B0126 - III, B0205 - III,
B0206 - III,


Note :

Cross drilling/milling
Gangtool, T01
Main Spindle
Speeder



B07-GSC-110



 ER16

 1:1

RPM max. 8'000

Machines Types

B073 - III, B074 - III,
B0123 - III, B0124 - III,
B0203 - III, B0204 - III,
B075 - III, B0125 - III,
B0126 - III, B0205 - III,
B0206 - III


Note :

Cross drilling/milling
Gangtool, T01
Main Spindle



B026-GSC-105-4X



	ER8
---	-----

	1:3.8
---	-------

RPM max.	22'800
-----------------	--------

Machines Types	B0265 II, B0265B II, B0325 II, B0325B II, B0266 II, 0326 II
-----------------------	---


Note :

Cross drilling/milling
Gangtool, T11 - T15
Main Spindle
Speeder



B026-GSC-107-4X



	ER11
---	------

	1:3.8
---	-------

RPM max.	22'800
-----------------	--------

Machines Types	B0265 II, B0265B II, B0325 II, B0325B II, B0266 II, 0326 II
-----------------------	---


Note :

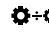
Cross drilling/milling
Gangtool, T11 - T15
Main Spindle
Speeder



B026-GSC-107-3X



 ER11

 1:3

RPM max. 15'000

Machines Types B0265 II, B0265B II,
B0325 II, B0325B II,
B0266 II, 0326 II


Note :

Cross drilling/milling
Gangtool, T11-T15
Main Spindle
Speeder



B026-BSC-110-HP



 ER11

 1:1

RPM max. 8'000

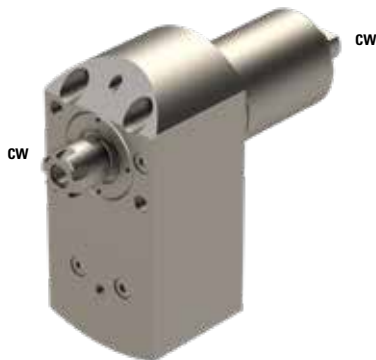
Machines Types B0265 II, B0265B II,
B0325 II, B0325B II,
B0266 II, 0326 II

Note :

Cross drilling/milling
Gangtool, T11 - T15
Main Spindle
Coolant through spindle



S20-RSC-107-3X




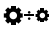
	ER11
	1:3
RPM max.	24'000
Machines Types	S205, S206
Note :	

Cross drilling/milling
 Gangtool T31 - T34
 Need 2 tool position (T35 - T38)
 Main Spindle
 Speeder



HS20-GSC-107-3X-II

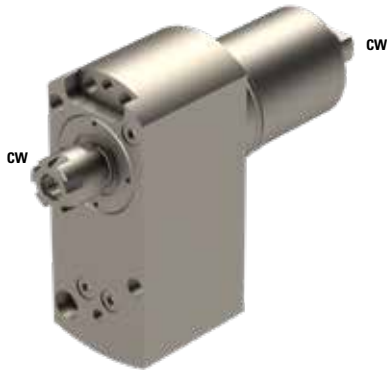



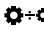
	ER11
	1:3
RPM max.	15'000
Machines Types	SS20, SS32, HS20, HS32
Note :	

Cross drilling/milling
 Gangtool, T01, T02, T11-T15
 Main Spindle
 Speeder



S20-RSE-107-3X




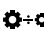
	ER11
	1:3
RPM max.	24'000
Machines Types	S205, S206
Note :	

Face drilling/milling
Back tool post T31 - T34
Need 2 tool position (T35 - T38)
Back Spindle
Speeder



HS20-GSE-107-3X-II

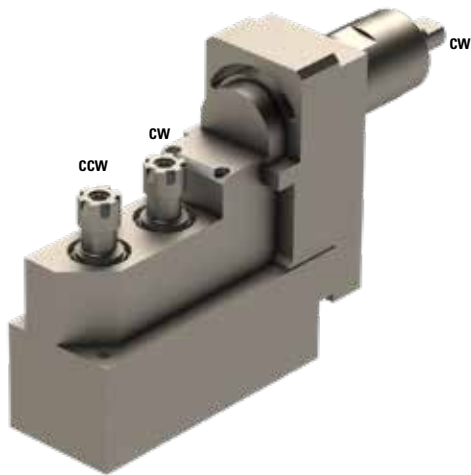



	ER11
	1:3
RPM max.	15'000
Machines Types	SS20, SS32, HS20, HS32
Note :	

Face drilling/milling
Back tool post T31 - T34
Need 2 tool position (T35 - T38)
Back Spindle
Speeder



B07-RSE-207



 2x ER11

 1:1

RPM max. 8'000

Machines Types

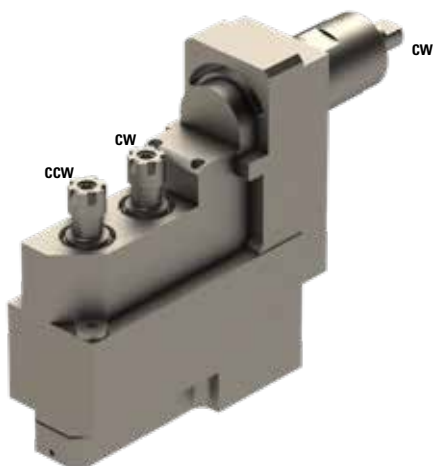
B073 - III, B074 - III,
B0123 - III, B0124 - III,
B0203 - III, B0204 - III,
B075 - III, B0125 - III,
B0126 - III, B0205 - III,
B0206 - III


Note :

Face drilling/milling
Gangtool, T01
Main spindle



B07-RSE-207-IK



 2x ER11

 1:1

RPM max. 8'000

Machines Types

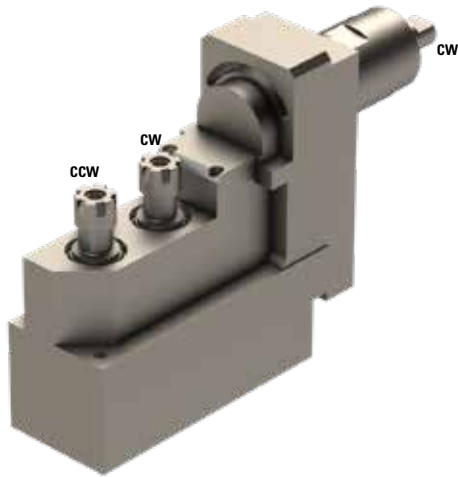
B073 - III, B074 - III,
B0123 - III, B0124 - III,
B0203 - III, B0204 - III,
B075 - III, B0125 - III,
B0126 - III, B0205 - III,
B0206 - III

Note :

Face drilling/milling
Gangtool, T01
Main spindle
Coolant through spindle



B07-RSE-207-2X



2x ER11



1:2

RPM max.

16'000

Machines Types

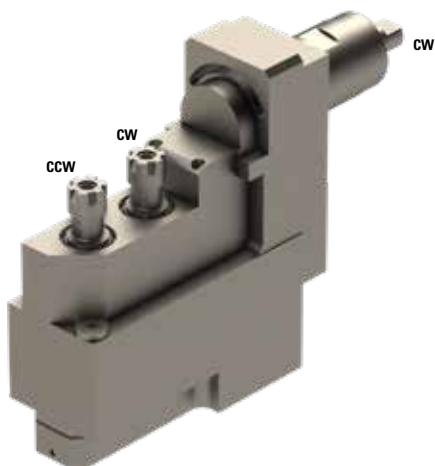
B073 - III, B074 - III,
B0123 - III, B0124 - III,
B0203 - III, B0204 - III,
B075 - III, B0125 - III,
B0126 - III, B0205 - III,
B0206 - III

Note :

Face drilling/milling
Gangtool, T01
Main spindle
Speeder



B07-RSE-207-IK-2X



2x ER11



1:2

RPM max.

16'000

Machines Types

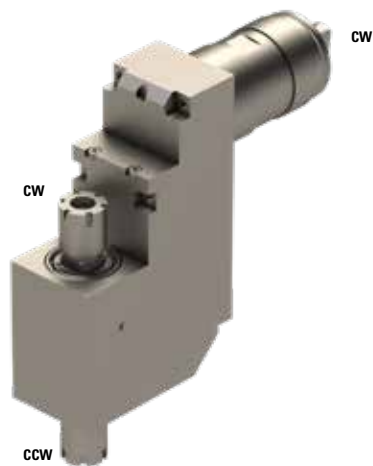
B073 - III, B074 - III,
B0123 - III, B0124 - III,
B0203 - III, B0204 - III,
B075 - III, B0125 - III,
B0126 - III, B0205 - III,
B0206 - III


Note :

Face drilling/milling
Gangtool, T01
Main spindle
Speeder
Coolant through spindle



B026-RSE-110



 2x ER16

 1:1

RPM max. 8'000

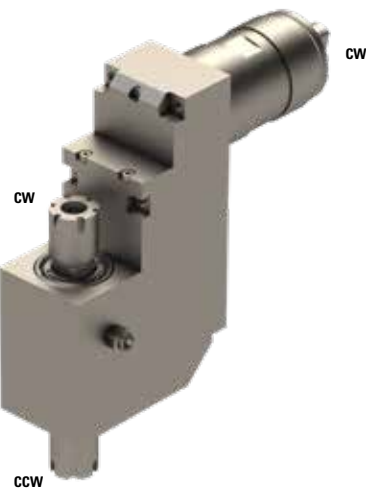
Machines Types BO26, BO32, BO38


Note :

Face drilling/milling
Gangtool, T11
Main and back spindle



B026-RSE-110-IK



 2x ER16

 1:1

RPM max. 8'000

Machines Types BO26, BO32, BO38


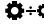
Note :

Face drilling/milling
Gangtool, T11
Main and back spindle
Coolant through spindle



B026-RSE-110M




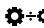
	ER16
	1:1
RPM max.	8'000
Machines Types	BO26, BO32, BO38
Note :	

Face drilling/milling
Gangtool, T11
Main spindle



B026-RSE-110M-IK

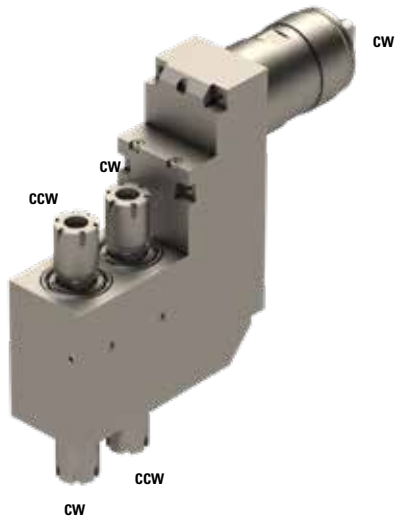


	ER16
	1:1
RPM max.	8'000
Machines Types	BO26, BO32, BO38
Note :	

Face drilling/milling
Gangtool, T11
Main spindle
Coolant through spindle



B026-RSE-210



2x 2x ER16



1:1

RPM max.

8'000

Machines Types

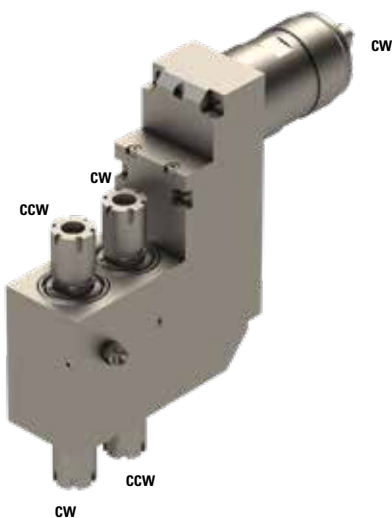
BO26, BO32, BO38

Note :

Face drilling/milling
 Gangtool, T11
 Main and back spindle



B026-RSE-210-IK



2x 2x ER16



1:1

RPM max.

8'000

Machines Types

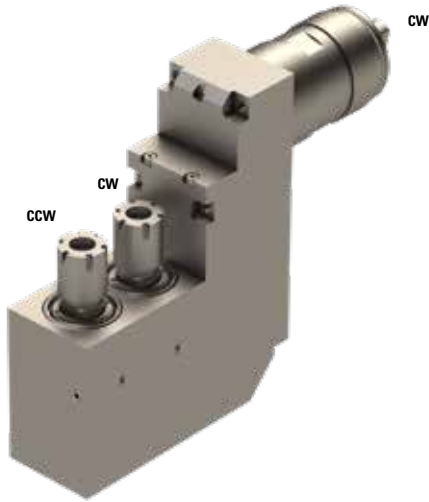
BO26, BO32, BO38


Note :

Face drilling/milling
 Gangtool, T11
 Main and back spindle
 Coolant through spindle



BO26-RSE-210M



	2x ER16
---	---------

	1:1
---	-----

RPM max.	8'000
-----------------	-------

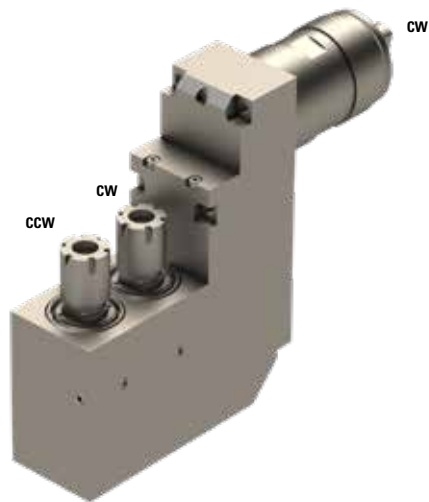
Machines Types	BO26, BO32, BO38
-----------------------	------------------


Note :

Face drilling/milling
 Gangtool, T11
 Main spindle



BO26-RSE-210M-IK



	2x ER16
---	---------

	1:1
---	-----

RPM max.	8'000
-----------------	-------

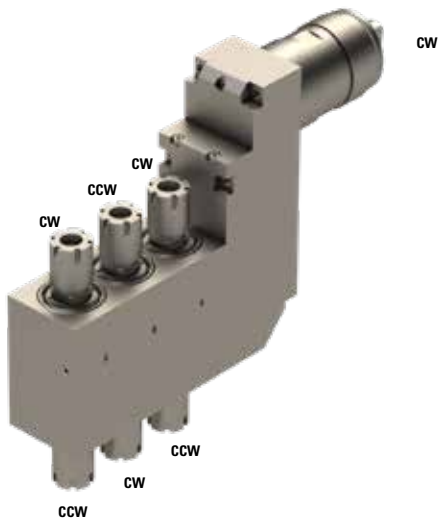
Machines Types	BO26, BO32, BO38
-----------------------	------------------


Note :

Face drilling/milling
 Gangtool, T11
 Main spindle
 Coolant through spindle



B026-RSE-310



	3x 2x ER16
---	------------

	1:1
---	-----

RPM max.	8'000
-----------------	-------

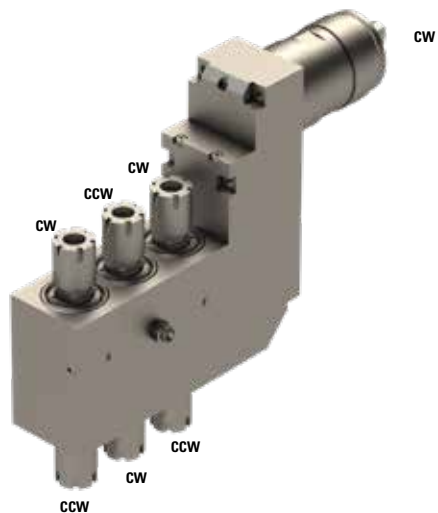
Machines Types	BO26, BO32, BO38
-----------------------	------------------


Note :

Face drilling/milling
Gangtool, T11
Main and back spindle



B026-RSE-310-IK



	3x 2x ER16
---	------------

	1:1
---	-----

RPM max.	8'000
-----------------	-------

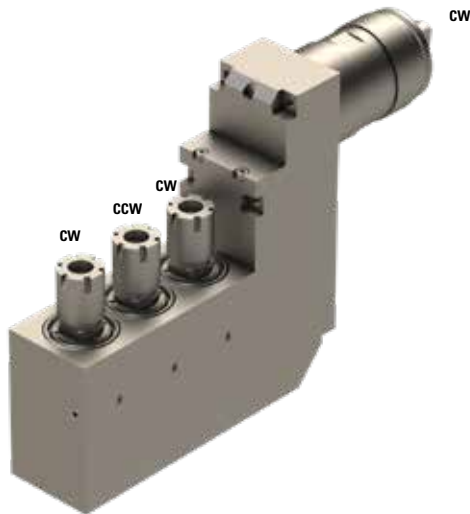
Machines Types	BO26, BO32, BO38
-----------------------	------------------


Note :

Face drilling/milling
Gangtool, T11
Main and back spindle
Coolant through spindle



BO26-RSE-310M



 3x ER16

 1:1

RPM max. 8'000

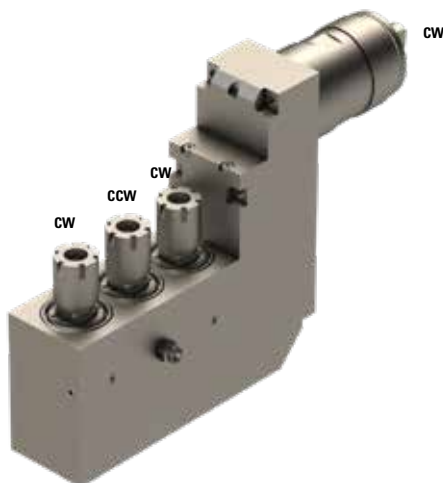
Machines Types BO26, BO32, BO38


Note :

Face drilling/milling
Gangtool, T11
Main spindle



BO26-RSE-310M-IK



 3x ER16

 1:1

RPM max. 8'000

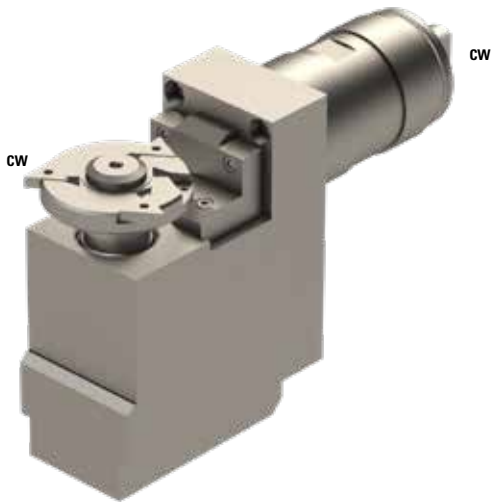
Machines Types BO26, BO32, BO38


Note :

Face drilling/milling
Gangtool, T11
Main spindle
Coolant through spindle



HS20-GSP-613



	13
---	----

	1:1
---	-----

RPM max.	5'000
-----------------	-------

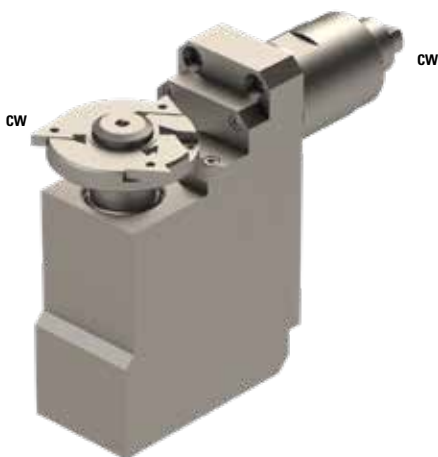
Machines Types	SS20, SS32, HS20, HS32
-----------------------	------------------------


Note :

Polygon cutting
 Gangtool, T01, T02, T11-T15
 Main Spindle
 Max. tool Ø72 mm
 Max. thickness 8.3 mm



S20-GSP-613



	13
---	----

	1:1
---	-----

RPM max.	8'000
-----------------	-------

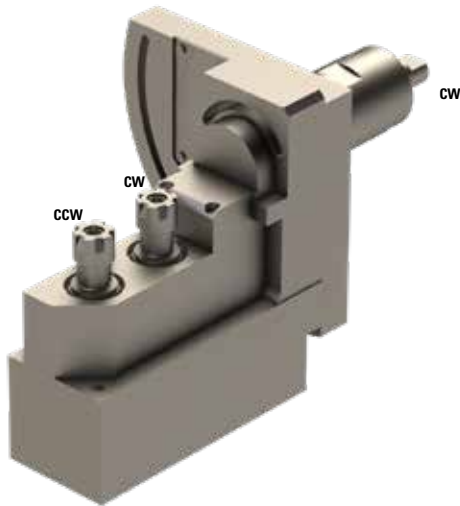
Machines Types	S205, S206
-----------------------	------------

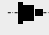
Note :

Polygon cutting
 Gangtool, T11, T13
 Main Spindle
 Max. tool Ø72 mm
 Max. thickness 8.3 mm



B07-GSA-207



 2x ER11

 1:1

RPM max. 8'000

Machines Types

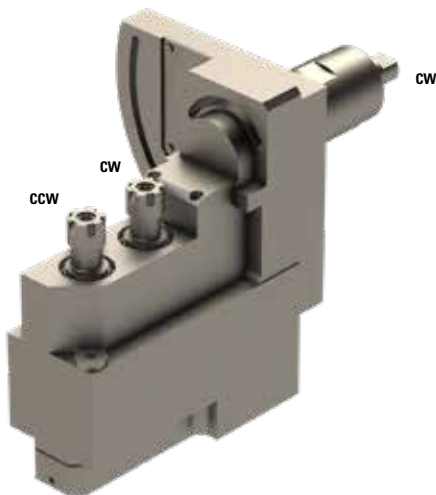
B073 - III, B074 - III,
 B0123 - III, B0124 - III,
 B0203 - III, B0204 - III,
 B075 - III, B0125 - III,
 B0126 - III, B0205 - III,
 B0206 - III


Note :

Face, cross & angular drilling/milling
 Gangtool, T01
 Main spindle
 Inclination : 90°



B07-GSA-207-IK



 2x ER11

 1:1

RPM max. 8'000

Machines Types

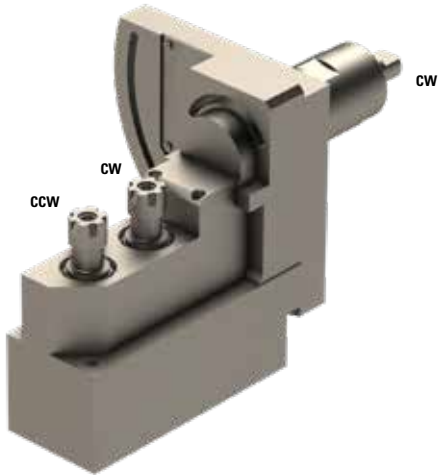
B073 - III, B074 - III,
 B0123 - III, B0124 - III,
 B0203 - III, B0204 - III,
 B075 - III, B0125 - III,
 B0126 - III, B0205 - III,
 B0206 - III


Note :

Face, cross & angular drilling/milling
 Gangtool, T01
 Main spindle
 Coolant through spindle
 Inclination : 90°



B07-GSA-207-2X



 2x ER11

 1:2

RPM max. 16'000

Machines Types

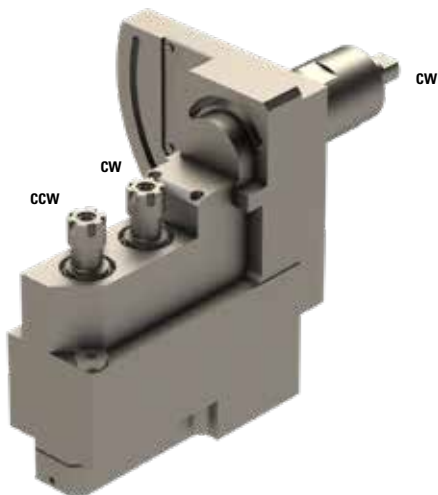
B073 - III, B074 - III,
B0123 - III, B0124 - III,
B0203 - III, B0204 - III,
B075 - III, B0125 - III,
B0126 - III, B0205 - III,
B0206 - III


Note :

Face, cross & angular drilling/milling
Gangtool, T01
Speeder
Main spindle
Inclination : 90°



B07-GSA-207-IK-2X



 2x ER11

 1:2

RPM max. 16'000

Machines Types

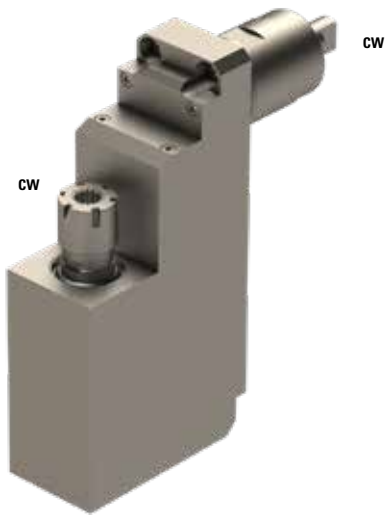
B073 - III, B074 - III,
B0123 - III, B0124 - III,
B0203 - III, B0204 - III,
B075 - III, B0125 - III,
B0126 - III, B0205 - III,
B0206 - III


Note :

Face, cross & angular drilling/milling
Gangtool, T01
Main spindle
Speeder
Coolant through spindle
Inclination : 90°



B07-GSS-110



 ER16

 1:1

RPM max. 8'000

Machines Types

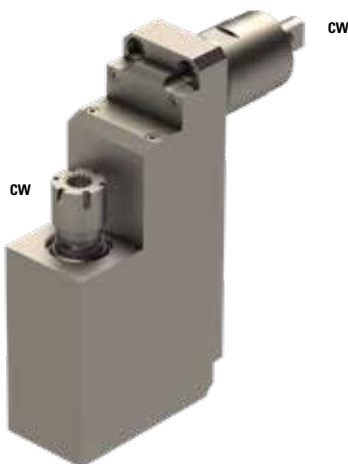
B073 - III, B074 - III,
B0123 - III, B0124 - III,
B0203 - III, B0204 - III,
B075 - III, B0125 - III,
B0126 - III, B0205 - III,
B0206 - III


Note :

Slitting
Gangtool, T01
Main Spindle
Milling cutter $\varnothing_{max}=70mm$
Driven toolholder for slitting or face drilling / milling



S20-RSS-110



 ER16

 1:1

RPM max. 8'000

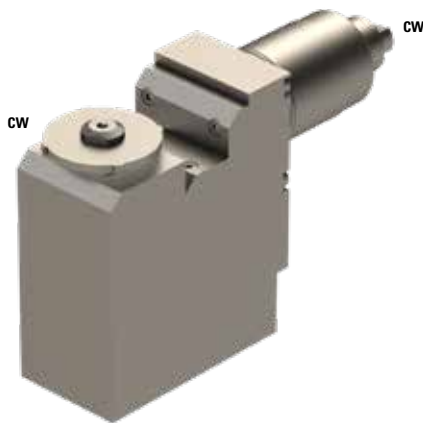
Machines Types S205, S206


Note :

Slitting
Gangtool, T11, T13
Main Spindle
Driven toolholder for slitting or face drilling / milling
Milling cutter $\varnothing_{max}=70mm$



B07-GSF-418



	8 mm
---	------

	1:1
---	-----

RPM max.	8'000
-----------------	-------

Machines Types

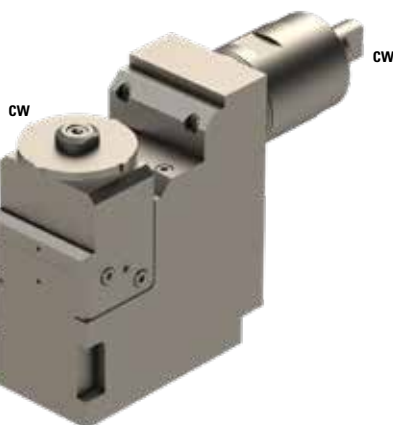
B073 - III, B074 - III,
 B0123 - III, B0124 - III,
 B0203 - III, B0204 - III,
 B075 - III, B0125 - III,
 B0126 - III, B0205 - III,
 B0206 - III


Note :

Gangtool, T01
 Main Spindle
 Driven toolholder for thread milling
 Milling cutters, $\varnothing_{\max}=72\text{mm}$, Width= L = 3-5 mm
 Line of cutting in 1mm of the spindle



B07-GSF-518



	8 mm
---	------

	1:1
---	-----

RPM max.	8'000
-----------------	-------

Machines Types

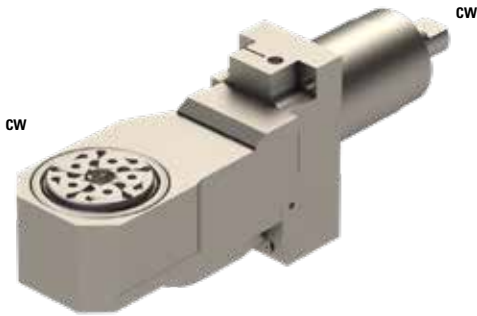
B073 - III, B074 - III,
 B0123 - III, B0124 - III,
 B0203 - III, B0204 - III,
 B075 - III, B0125 - III,
 B0126 - III, B0205 - III,
 B0206 - III

Note :

Gangtool, T01
 Main Spindle
 Driven toolholder for thread milling
 Milling cutters, $\varnothing_{\max}=72\text{mm}$, Width= L = 3-5 mm
 Line of cutting in 1mm of the spindle
 Slope 0...1.5°



TSUGAMI1-GSW-220



∅	-
⚙️+⚙️	1:1
RPM max.	8'000
Machines Types	S205, S206
Note :	

Adjustable $\pm 20^\circ$
Main Spindle
1 PCM cutterhead included:
- GSW-220-FPGLO Z=5, $\varnothing 6$ mm
- GSW-220-FPSWG Z=5, $\varnothing 6$ mm
- GSW-220-FPSWG-II Z=5, $\varnothing 6$ mm
Basis TSUGAMI1-PCR
Head GSW-220

Inserts are not included



Blank lined area for notes.







Visit us online :
www.pcm.ch



PCM Willen SA

Route du Grammont 101
1844 Villeneuve
Switzerland

Tél. +41 (0)21 967 33 66
Fax: +41 (0)21 960 38 95